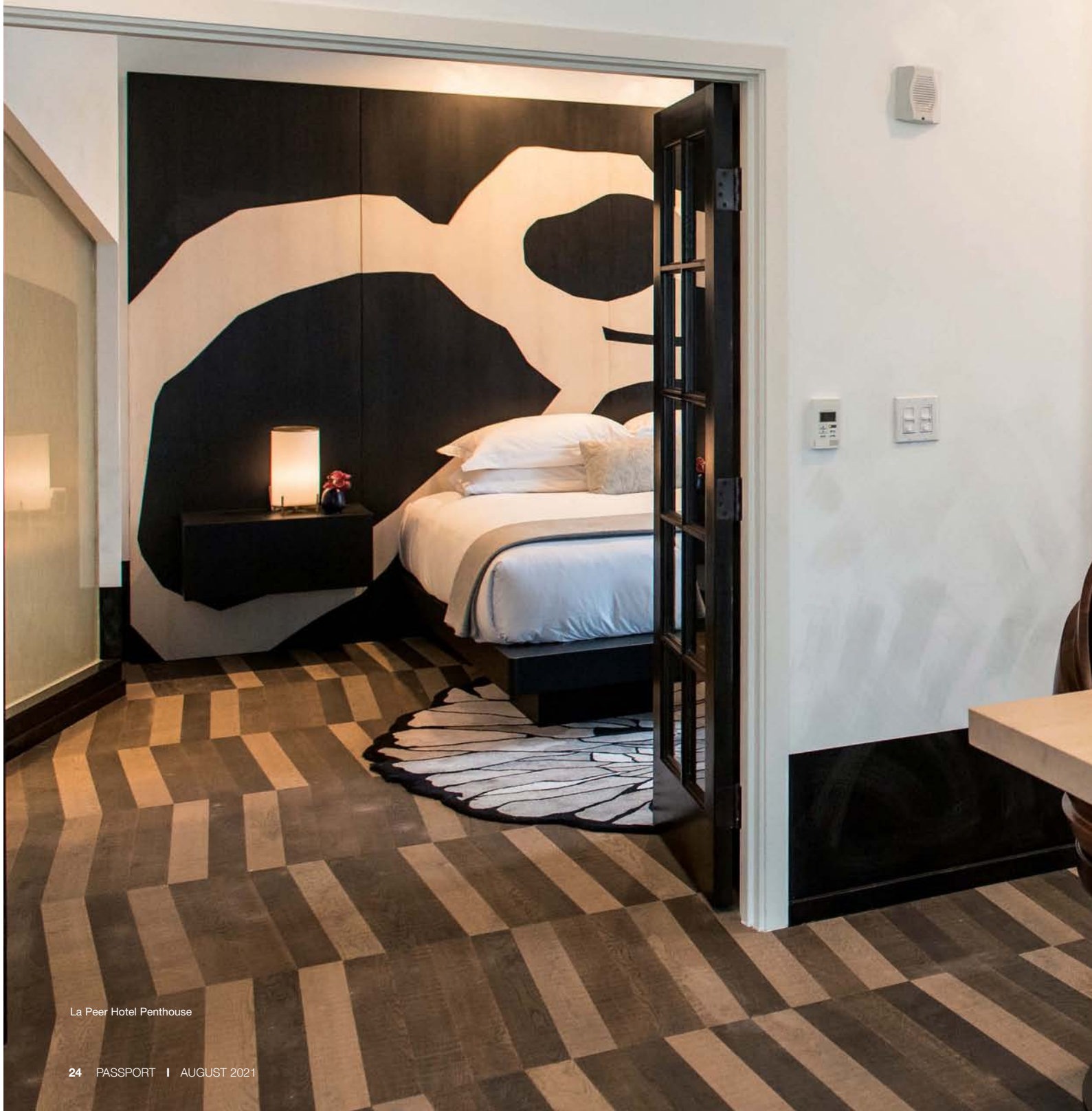


DESIGN HOTELS AROUND THE WORLD

by Matthew Wexler



La Peer Hotel Penthouse



More travelers than ever before are embracing culturally immersive spaces that offer unique and innovative design interpretations. The world's leading interior designers, architects, and artists are turning to the hospitality industry for inspiration. There's never been a better time for design-centric travelers to experience these creations, where new and restored hotels showcase a keen sense of style. The following properties represent the spectrum of design-focused hotels around the world.

La Peer Hotel sits at the heart of West Hollywood's Design District, proving that the pulsating beat of gay nightlife and curated art and fashion make perfect bedfellows. In Copenhagen, **The Radisson Collection Royal Hotel** (originally designed by Arne Jacobson) is perhaps the benchmark property by which all others are measured. Asheville's **Foundry Hotel** embraces the mountain town's industrial roots, while the **Times Square EDITION** reminds visitors that sophistication and serenity can exist beyond the hustle of New York City. A trip to the countryside can also provide such niceties, such as at **Heckfield Place**, a Georgian manor in Hampshire, England with lush gardens and grounds you'll never want to leave.

Each property, unique in its conception and surroundings, offers more than just a room to rest one's head. Don't be shy about asking for a tour, or dining in the hotel. When there's so much to explore and experience in your hotel, you'll want to savor every moment you are there.

KIMPTON LA PEER HOTEL WEST HOLLYWOOD, CALIFORNIA

West Hollywood's design district has become an epicenter for boundary-pushing designers, from the early days of Herman Miller and Phyllis Morris to today's prominent designers such as Martyn Lawrence Bullard,

Michael Smith, and Peter Dunham.

The **La Peer Hotel** (627 N. La Peer Dr., Tel: 213-296-3038, www.lapeerhotel.com), designed by Icelandic-born Gulla Jónsdóttir, is a living tribute to West Hollywood's design sensibility. Jónsdóttir's architecture and design firm has created an urban oasis that draws inspiration from the city's history as an enclave for artists, bohemians, and progressive thinkers.

"Imagine a space where art, music, fashion, poetry, film and architecture intertwine to a cacophony of spatial harmony," suggests Jónsdóttir. "With this project, we took design cues from our neighbors—from fashion to high-end furniture, artists, and poets—in addition to the array of creative visitors who gather from all over the world. By collaborating with a number of artists, the space is alive with their creative energies, arousing a sense of stylish curiosity."

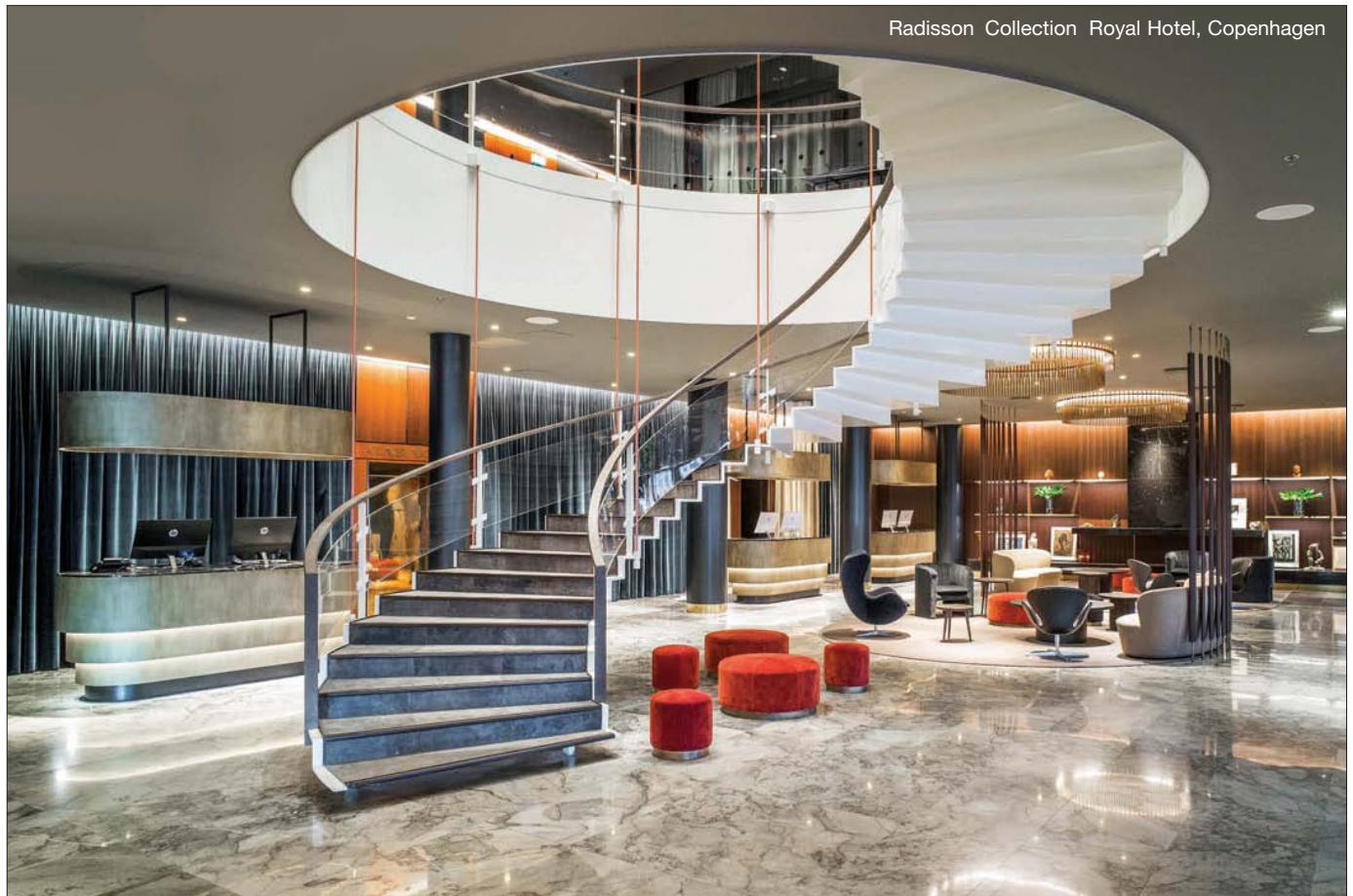
The designer, whose original studio was in the former building on the site that now encompasses 105 guestrooms and suites, along with 8,000 square feet of dining and lounge space, opted for soothing earth tones and natural materials to create an enveloping aesthetic with artistic surprises around every corner. The intersection of board foam concrete, leather walls, and white oak flooring provides a backdrop for Jónsdóttir's exquisitely curated art collection, including breathtaking large-scale works throughout the hotel's public spaces by artist Kahori Maki.

While each of the rooms and suites offers a sense of individuality, the Design Suite displays exceptional details, including soaring 20-foot ceilings, Venetian plaster walls, and a deep soaking tub with Ole Henriksen's spa-inspired bath amenities. Guests can bring a bit of the La Peer home after a visit to Jónsdóttir's on-site atelier, which showcases a different artist each month along with the designer's works and custom-designed furniture.

One may never want to leave La Peer, with its secluded outdoor pool and



Lobby of La Peer Hotel



Radisson Collection Royal Hotel, Copenhagen

Don't be shy about asking for a tour, or dining in the hotel. When there's so much to explore and experience in your hotel, you'll want to savor every moment you are there.

enticing trattoria, but Jónsdóttir's nearby inspiration beckons. "West Hollywood is the epicenter of Los Angeles to me," she says, "with its walkable neighborhoods of exquisite art galleries, fashion, furniture, and culinary treats, I find myself very content living and working in this beautiful city."

The nearby **Pacific Design Center** (8687 Melrose Ave., Tel: 310-657-0800, www.pacificdesigncenter.com), a 1.6 million-square-foot campus, anchored by three geometrically captivating buildings in bright red, evergreen, and cobalt blue, is a showcase for those who may want exclusive access to today's most in-demand designers. While there are various public spaces to appreciate, it's best to contact Pacific Design Services (Tel: 310-360 6418) for a designer referral if you're looking for professional assistance with a specific project or to arrange admittance to designer showrooms for a more informal exploration.

There is also plenty to discover by simply wandering the pedestrian-friendly streets throughout the **Design District** (www.westhollywooddesigndistrict.com), from soft furnishings and fashion to fine art.

Dining and nightlife also embody West Hollywood's eclectic aesthetic, and while there's no shortage of restaurants from which to choose, this recommended shortlist will steer you in the right direction. **Laurel Hardware** (7984 Santa Monica Blvd., Tel: 323-656-6070, www.laurelhardware.com) occupies (you guessed it) a former hardware store, but don't expect nail bins and paint chips. The bustling space overflows with natural woods and plenty of foliage,

while the vegetable-forward, far-reaching menu offers something for everyone, as does the requisite well-primped crowd.

Reality television fans and locals alike are flocking to Lisa Vanderpump's latest venture in collaboration with junior partners Tom Sandoval and Tom Schwartz, **Tom Tom** (8932 Santa Monica Blvd., Tel: 310-360-0963, www.tomtombar.la). Miami-based designer Nick Alain has created a more industrial space than Vanderpump's other ventures with the use of Edison lightbulbs throughout, a massive floor-to-ceiling timepiece behind the bar, and purposefully mismatched bar stools. The cocktail menu, created in collaboration with mixologist Sly Cosmopoulos, is equally inventive, with off-beat ingredients such as habanero crystals, aquafaba, and butterfly pea tea.

For a fun nightlife experience, don't miss a visit to **The Abbey** and the adjacent **Chapel** (692 North Robertson Blvd., Tel: 310-289-8410, www.thabbeyweho.com). Its church theme accentuated by enormous stained glass windows, and "Sunday Funday" presents a terrific weekend party in West Hollywood.

THE RADISSON COLLECTION ROYAL HOTEL COPENHAGEN, DENMARK

Born out of Denmark's mid-20th-century necessity to create functional design from limited materials, the country's world-renowned minimalist



Tom Tom, West Hollywood

Guest Room at Radisson Collection Royal Hotel, Copenhagen



aesthetic has become its trademark. The movement's founders such as Georg Jensen paved the way for today's tastemakers like Louise Campbell and **HAY House** (Østergade 61, 2, Tel: +45-4282-0820, www.hay.dk/en-gb), a collective of designers "that uses sophisticated industrial manufacturing to satisfy the needs of modern living."

Innovative Danish design can be found in every corner of the city, but for a master class in bringing all of those elements together, a stay at **The Radisson Collection Hotel, Royal Copenhagen** (Hammerichsgade 1, Tel: +45 3342 6000, www.radissoncollection.com/en/royalhotel-copenhagen) is an absolute must. The property, built in 1960 and designed by Arne



The New Bar at Radisson Collection Royal Hotel, Copenhagen

Jacobson, is considered the world's first design hotel. The iconic Swan and Egg chairs, whose silhouettes have become staples of Danish design, were exclusively designed for the property, along with a natural color palette and fluidity that brings warmth to those long Nordic winters.

While still honoring Jacobson's legendary work, Space Copenhagen and Fritz Hansen were tasked with reimagining the hotel in 2018, and the results are exquisite. A soaring spiral staircase in the hotel's lobby provides a dramatic centerpiece, with those eye-catching chairs beckoning respite upon arrival. Café Royal, the bistro-style restaurant, marries Danish and French influences, where natural woods and floral chartreuse prints provide a visual backdrop for a dynamic, seasonal menu, where you can spend an afternoon enjoying the Arne Jacobson Tea Experience, served on Royal Copenhagen porcelain.

For a deep dive into Danish design, consider booking one of the five signature suites, including Room 606, the hotel's only space that has maintained Jacobson's exacting original design. Nature-inspired greens and blues offset dark woods, while a horizontal band of windows provides a portal to the city skyline, though it's the suite's interior characteristics that truly captivate the eye.

Be sure to seek out other notable design elements throughout the hotel, including the Artichoke lamps, originally manufactured by Louis Poulsen and featuring 72 delicate latticed leaves, or the AJA flatware, which was featured in Stanley Kubrick's *2001: A Space Odyssey*.

Hit the streets to discover even more of Copenhagen's design-centric offerings. **Design Museum Denmark** (Bredgade 68, Tel: +45-3318-5656, www.designmuseum.dk/en) dates back to 1890 and currently occupies a Rococo building that was once Denmark's first public hospital. Today, the collection contains Danish design archives, industrial designs from around the world, and an extensive poster collection. If you want to bring a bit of Danish design home, visit **Normann Copenhagen's** (Østerbrogade 70, Tel: +45-3527-0540, www.norman-copenhagen.com/en) showroom. Founded by Jan Andersen and Poul Madsen, the brand showcases furniture, lamps and accessories in a flagship store featuring marbled beams, mirror glass, and a bubblegum pink lower level that will take your breath away.

Nordic cuisine and design intersect at **Alouette** (Sturlasgade 14P, 1, Tel: +45-3167-6606, www.restaurant-alouette.dk) in the Islands Brygge neighborhood. Discovering Nick Curtin and Camilla Hanse's hideaway in an industrial factory is half the fun, but their continually evolving five-course menu in collaboration with Andrew Valenzuela showcases the simplicity and seasonality of Danish cuisine. Just as much attention has been paid to the surroundings, designed by KBH Møbelsnedkeri and various collaborations. From your initial entrance through a hidden oak door to the unsuspecting greenhouse bathed in natural light to ceramics by Gurli Elbaekgaard and Søren Solkjær's "Sort Sol" (Black Sun) artwork, Alouette is at once a diner's dream and embodiment of Danish design.

THE FOUNDRY HOTEL ASHEVILLE, NORTH CAROLINA

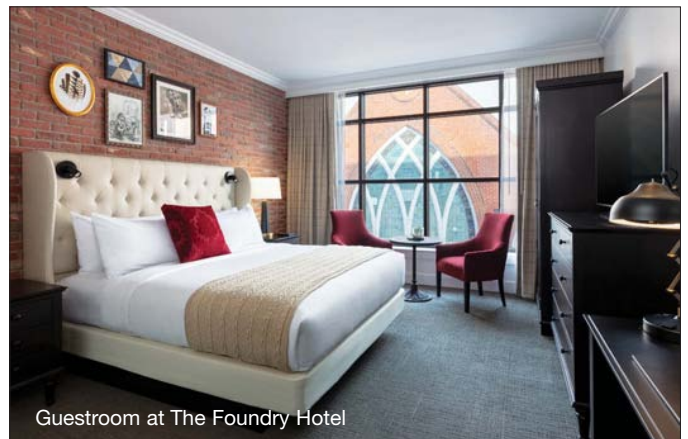
Head to the mountains to experience crisp air, astounding architecture, and a cultural and culinary scene that is perhaps the best-kept secret east of the Mississippi. Nestled in the Blue Ridge Mountains, Asheville has had its share of ups and downs. The city committed to paying back its debt after the 1929 stock market crash and was so cash-poor that it couldn't even afford demolition, thus preserving some of the era's most exquisite architecture. What's old is new again as Asheville's renaissance continues to soar.

Past and present intersect at the **Foundry Hotel** (51 South Market St., Tel: 828-552-8545, www.foundryasheville.com). Three early 20th-centu-

ry buildings seamlessly connect with new construction to create an 87-room luxury boutique hotel on a site that once forged steel for the nearby Biltmore Estate. Part of Hilton's (a longtime supporter of the LGBTQ community) Curio Collection, the Foundry's industrial charm and attention to detail is irresistible. Its location within The Block neighborhood is at the epicenter of what was once the city's African American business district. Opinions differ on the area's gentrification, but the Foundry honors the community's legacy as part of its mission.



The Workshop Lounge
at The Foundry Hotel



Guestroom at The Foundry Hotel



Suite Livingroom at The Foundry Hotel

Reclaimed design elements appear throughout the property. Walking among the hallways feels like a treasure trove of Asheville's history, with exposed beams, steel-star fastenings, and industrial-style windows framing its imaginative interior. Look a bit closer and you'll discover artworks that pay homage to Asheville's past. Highlights include a large-scale illustration of Holman T. Waldron's *With Pen and Camera thro' 'The Land of the Sky'* (1902) printed over vintage books, photographs of the foundry during its heyday, historic newspaper reproductions from *The Asheville Citizen*, and contemporary prints and sculptures.

For those that want to enjoy the great outdoors, The Foundry's on-site Asheville Supply & Foundry Co. Marketplace can outfit you with the necessary gear, but be sure to return in time for dinner at the hotel's restaurant, **Benne on Eagle**.

Executive chef-owner John Fleer knew that the restaurant should reflect the community's pulsating heritage (it was once a hotspot for touring artists such as James Brown and Percy Sledge). The result is a reimagining of Appalachian soul food, inspired, in part by four African-American women: Mary Jo Johnson, Earlene McQueen, Frances Hutchinson, and Hanan Shabazz, who ran businesses in the area. No meal at Benne on Eagle should begin without taking a moment to gaze upon their portraits. And while Fleer's five James Beard nominations may attract culinary aficionados, he's smartly hired Ashleigh Shanti as chef de cuisine. Shanti, a southern black woman, says, "We're not just a restaurant. There is a goal, a purpose and a story to tell."

That story includes mentorship from Shabazz and dishes that simultaneously reflect a local cultural legacy, while still offering a forward-moving culinary perspective. Deviled egg spread arrives with purposefully clunky local radishes for dipping. Catfish and waffles receive a kick of brightness thanks to chow chow (a vinegar-based slaw). Oxtail and cream peas marry French technique (think beef bourguignon) with West African spices and Carolina Gold rice. "I feel so fortunate to be the voice of this restaurant," says Shanti with a humble disposition that allows the cuisine to speak volumes.

To have a more profound sense of The Block's history, DeWayne Barton's **Hood Huggers** (www.hoodhuggers.com) offers insights through driving and walking tours. Stephens-Lee High School, built in 1923, was one of the state's most prestigious all-black high schools before it was desegregated in 1965. The building, except for the gymnasium, was demolished a decade later, preserving just a small part of its significance. Barton also integrates local talent to tell his story, such as Mike Martinez, lead singer for local band Natural Born Leaders, who speaks and sings of generational trauma, an important aspect of the area's redevelopment. A final stop on Barton's tour at the **Burton Street Peace Gardens** (www.facebook.com/peace.gardens.and.market) reveals a multi-use outdoor community space comprised of found objects, sculpture, and garden plots.

Only a few miles south of The Block, America's largest private home stands in gilded glory amid 8,000 lush acres. George Vanderbilt first visited Asheville in 1888, and a year later construction of **Biltmore House** (One Lodge St., Tel: 800-411-3812, www.biltmore.com), a 250-room French Renaissance chateau, began. It would take six years and hundreds of laborers to complete. Landscape architect Frederick Law Olmsted was hired to oversee the gardens, which feature more than 250 varieties of roses along with an array of perennials and foliage from April through October.

From the soaring banquet hall with 70-foot ceilings to George's unrestored private library with terra cotta tile, each room reveals a treasure trove of the world's most acclaimed artisans. For the ultimate bucket list experi-

ence, consider booking a Premium Biltmore House Tour (\$175/per person), which provides an exclusive guide and priority access to the house's most coveted spots. With more than one million annual visitors, even a 178,926-square-foot house can get crowded. Luxury abounds around every corner, but standouts include Ming Dynasty pottery and the Pelligrini-painted ceiling found in the main library; a 70,000-gallon swimming pool with tile vaulting designed by Rafael Guastavino; and the Louis XV room, featuring restored Tassinari & Chatel velvet wall coverings.

The next generation of artisans is also making its mark in Asheville, including **East Fork Pottery** (82 North Lexington Ave., Tel: 828-237-7200, www.eastfork.com), which in eight short years has become a sell-out commodity with each new collection. Over a couple of bottles of wine (when the best ideas are hatched), co-founders Alex and Connie Matisse and John Vigeland dreamt of how they could work together. The team now employs an arsenal of potters, glazers, and other artisans in their bustling factory (tours available by reservation only), or shop the collection at the downtown retail location. East Fork sources clay from throughout the Southeast to create collectible stoneware, such as hand-dipped mugs, tumblers and other serveware. Each summer, the company releases a limited edition Equality Mug that celebrates *Obergefell v. Hodges* Supreme Court ruling, with 100 percent of proceeds donated to the Campaign for Southern Equality.

For a final flourish of design and dining, **Sovereign Remedies** (29



Terrace at Times Square EDITION



Times Square EDITION Lobby



Outdoor Terrace at The Times Square EDITION



Cocktails at The Times Square EDITION



701WEST at Times Square EDITION

North Market St., Tel: 828-919-9518, www.sovereignremedies.com) offers a foraged, vegetable-forward menu in a vintage setting that feels like your quirky aunt's living room. Locally built furniture and fixtures by Iron Maiden Studios create an industrial-chic vibe, but it's Chef Graham House's vibrant menu, punctuated by Native American Lady Tyson's foraged finds, that is the true showstopper. A recent tasting featured Japanese sweet potato with a Chinese mustard puree and toothy faro, housemade tagliatelle with creamy greens (think arugula), and beef tartar with locally sourced meat from Hickory Nut Gap Farm.

TIMES SQUARE EDITION NEW YORK, NEW YORK

Ian Schrager, one of the masterminds behind the legendary Studio 54,

puts his unique stamp on the chameleon-like **Times Square EDITION** (701 Seventh Ave., Tel: 212-398-7017, www.editionhotels.com/times-square). In its heyday, Times Square was a cultural hub, packed with jazz clubs, nightlife, and entertainment. Its mid-20th-century decline eventually turned a corner, thanks in large part to the revitalization of 42nd Street and Disney's renovation of the New Amsterdam Theatre. Built in 1903, it's Broadway's oldest operating theatre.

Schrager and an arsenal of designers, architects, and cultural influencers have created a 452-room oasis in the heart of Manhattan. Every corner reveals the property's attention to detail. From the entryway featuring Venetian plaster walls and a glowing stainless-steel orb inspired by Anish Kapoor and Jeff Koons, to the outdoor terrace garden overlooking Times Square, the never-ending kaleidoscope is a stunning, and occa-

Heckfield Place Signature Room



Heckfield Place Private Dining



Heckfield Place Signature Room



sionally startling, visual feast.

The lobby's stark black and white palette seduces guests with its ebonized oak French chevron-patterned floors and Christian Liaigre wing back chairs. Twenty-six suites feature outdoor terraces, with interiors furnished in soothing ivory tones and custom silk pleated shades. Photography from the Trunk Archives of Andy Warhol Factory includes legendary works in custom gold leaf frames.

Times Square EDITION has quickly become Midtown's dining, cocktail, and entertainment destination with a stellar food and beverage program. **701West Cocktail Lounge** and its adjacent restaurant have thrown down the gauntlet in terms of innovation and creativity. The lounge, in various shades of green, features a circular bar (no seats), positioned as a showcase for master mixologists Salvatore Tafuri and Gates Otsuji, who shake and stir memorable libations such as the Signature Manhattan, featuring Maker's Mark single barrel (specifically bottled for the hotel), house vermouth, and bitters.

Step next door into the electric blue world of **701West Restaurant** (www.701westnyc.com), helmed by acclaimed chef John Fraser, whose West Village vegetarian restaurant NIX earned a Michelin star. The three-course menu may be paired with advanced sommelier and wine director Amy Racine's Old World picks, or allow the champagne cart to roll by to indulge in selections such as Dom Perignon or Château Rives-Blanques. For a more casual option, brunch on the terrace includes a veggie-forward mezze platter, lobster soft scramble, and a pastry tower that rivals the Empire State Building.

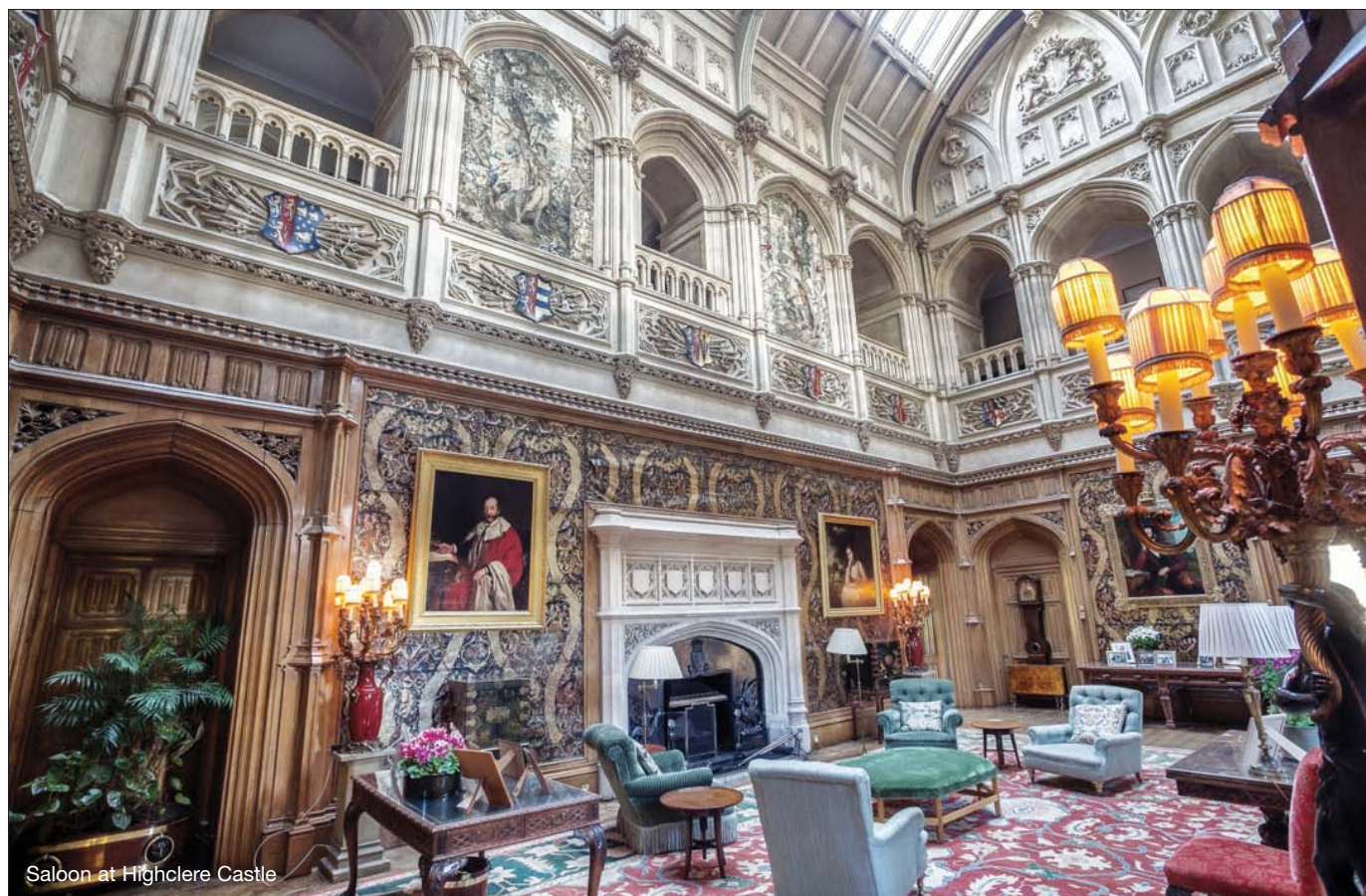
The nearby **Museum of Arts and Design (MAD)** (2 Columbus Circle, Tel: 212-299-7777, www.madmuseum.org) offers a sensory catchall of design-driven industries housed within a building designed by architect Edward Durell Stone, which the museum renovated and occupied in the fall of 2008. The museum's location on the southwest corner of Central Park offers gorgeous views from **Robert**, its modern American restaurant that's a terrific spot to unwind after taking in the ever-changing exhibitions. Ongoing displays include works from its studio and contemporary jewelry collection, including exquisite pieces by Tiffany & Co.

With so much art, design and architecture to appreciate, consider utilizing an expert to curate an experience specifically for you. **ART SMART** (Tel: 212-595-4444, www.artsmart.com) offers a range of tours, typically led by an art historian who can provide in-depth insight and perspective. Whether you're looking for up and coming or big and bold, a well-crafted tour can take the guesswork out of roaming Manhattan's streets. ART Smart's latest offering, Tech X Art, explores the intersection of art and technology.

HECKFIELD PLACE HAMPSHIRE, ENGLAND

Sophistication, elegance, and 21-century flair converge at **Heckfield Place** (RG27 0LD, Tel: +44-118-932-6868, www.heckfieldplace.com), a Georgian manor that has been transformed into a harmonious home of classic design and modern amenities. Prominent families have owned the 400-acre estate over the decades, but it is designer Ben Thompson who has revitalized the property into an alluring yet secluded respite.

Thompson's meticulous sourcing reveals local craftsmanship as well as antiques from throughout the British Isles. Felicity Irons' hand-woven rugs and headboards showcase the rush weaver's mastery; Terence Conran and Sean Sutcliffe's bespoke furniture brand, Benchmark, appears throughout the property (keep an eye out for the quaint drink cabinets); hand-dyed textiles and embroidered works by Lucy Bathurst bring a softness to the surroundings; and various ceramicists such as José Carvalho



Saloon at Highclere Castle

and Effie Gibson were utilized to create exceptional dishware.

Each guest room within the house has a distinct character and offers a different kind of experience for its inhabitants. Chamber rooms are airy with garden views, Signature rooms offer discretion for those who want to sneak away and cozy up with a good book, and the private, two-bedroom Church Lodge is nestled among the estate's natural beauty.

Culinary director Skye Gyngell oversees the food and beverage programs, which encompass several different venues. Much of the produce is grown on-site or sourced from nearby Fern Varrow farm. Seasonality is a key component at **Marle**, while **Hearth** uses classic cooking methods over an open flame and is only available to guests on Friday or Saturday evenings (but well worth the wait). **Moon Bar**, inspired by the lunar phases, showcases tinctures and small-batch spirits and is an ideal spot to reminisce about the day's adventures.

Be sure to inquire about a tour of the property's extensive art collection, featuring works by Mary Fedden, Alberto Morrocco, and an enchanting painting of Virginia Woolf by Marguerite Darbeur, which can be found in the Long Room, the most coveted suite on the estate.

There is also plenty to explore for those desiring to commune with nature. The lakes and "pleasure grounds," with their undulating landscapes, date back to the 1820s. Nearby woodlands showcase the horticultural efforts of William Wildsmith. The Assembly, Heckfield Place's on-site programming, offers a broad range of experiences from movies in its intimate screening room to botanical painting and spirit tastings.

It's easy to go from feeling like royalty to visiting royalty at nearby **Highclere Castle** (Newbury RG20 9RN, Tel: +44-163-525-3210, www.highclerecastle.co.uk), home to the 8th Earl and Countess of Carnarvon and the setting for the wildly popular *Downton Abbey*. The film release

based on the popular television series bolstered an already Anglophile obsession with the historic property, which epitomized Edwardian opulence upon its 40-year reimagining, completed in 1878. The estate offers a kaleidoscope of riches, from the gothic-style saloon with leather walls and the downstairs staff quarters to the surrounding gardens and grounds.

For a more far-reaching look at England from the Thames River, consider **European Waterways' Magna Carta** (Tel: 877-879-8808, www.europeanwaterways.com), an eight-passenger deluxe hotel barge that will whisk you away to some of the country's most acclaimed sites, including Highclere Castle.

"Highclere Castle looks magnificent on television, but it's even more impressive in person, with the splendor of its rooms and the castle's beautiful parkland bringing the magnificence of the drama to life," says Derek Banks, managing director of European Waterways. "*Magna Carta*'s excursion shows how England's aristocracy lived, but our guests will also receive the 'royal treatment' while on the barge throughout the entire cruise." Other stops on the cruise include Windsor Castle, Hampton Court Palace, and Cliveden Estate (home to the Astor family).

For a more contemporary perspective on design, visit London's **Design Museum** (224-238 Kensington High St., Tel: +44-20-3862-5900, www.designmuseum.org). Its current space occupies a 1960s landmark building in West London. Noteworthy. Upcoming exhibitions include "Waste Age" (Opening Saturday October 23, 2021), which asks the question "Can design help solve the problem of waste?" Discover how imaginative new approaches and ingenious new materials could shape a cleaner future. Also, don't miss, "Beazley Designs of the Year," an annual celebration of the world's most innovative designers, products, and concepts. ■

design hotels resources

WEST HOLLYWOOD

La Peer Hotel. West Hollywood's Design District comes alive at this dynamic Kimpton property designed by Gulla Jónsdóttir, featuring an on-site gallery, outdoor space, and rotating roster of cultural events. 627 N. La Peer Dr., Tel: 213-296-3038. www.lapeerhotel.com

Laurel Hardware. A former hardware store provides the backdrop for an eclectic menu, craft cocktails, and a fashion-forward crowd. Weather permitting, request an outside table nestled amid swaying trees and a California sunset. 7984 Santa Monica Blvd., Tel: 323-656-6070. www.laurelhardware.com

Pacific Design Center. Three bold buildings house some of the world's most influential interior designers. An appointment is necessary for access to their studios to explore the latest creations in furniture, textiles and soft furnishings. 8687 Melrose Ave., Tel: 310-657-0800. www.pacificdesigncenter.com

The Abbey. No bar crawl is complete without a stop at this iconic LGBTQ-friendly bar, which offers drink specials, various seating areas, go-go boys, and a large outdoor patio. 692 North Robertson Blvd., Tel: 310-289-8410. www.theabbeyweho.com

Tom Tom. Vanderpump Rules fans are flocking to Lisa Vanderpump's latest venue, helmed by Tom Sandoval and Tom Schwartz. The industrial space's backdrop is only overshadowed by a team of hunky bartenders and potent libations. 8932 Santa Monica Blvd., Tel: 310-360-0963. www.tomtombar.la

COPENHAGEN

Alouette. This buzz-worthy Copenhagen restaurant offers a nod to Nordic cuisine in an unexpected industrial space which is just the beginning of the culinary adventure. Sturlasgade 14P, 1, Tel: +45 3167 6606. www.restaurant-alouette.dk

Design Museum Denmark. This global collection of decorative art, crafts, and industrial designs is housed within Denmark's first public hospital. Don't miss its permanent 20th-century exhibition. Bredgade 68, Tel: +45 3318 5656. www.designmuseum.dk/en

HAY House. This interior design shop is packed with terrific finds, whether you want to bring a piece of Danish design home or simply admire today's trendsetters. Østergade 61, 2, Tel: +45 4282 0820. www.hay.dk/en-gb

Normann Copenhagen. This contemporary showroom embodies the best of Danish design in an innovative and unusual setting. Head to the lower level for a monochromatic pop of pink. Østerbrogade 70, Tel: +45 3527 0540. www.norman-copenhagen.com/en

The Radisson Collection Royal Hotel. Arne Jacobson's mid-century Danish design has



recently been reimagined for the next century, with all of those iconic details persevered and celebrated throughout the property. Hammerichsgade 1, Tel: +45 3342 6000 www.radissoncollection.com/en/royalhotel-copenhagen

ASHEVILLE

Biltmore House. George Vanderbilt's epic turn-of-the-century estate celebrates craftsmanship from around the world with luxurious details adorning every room. Allow time to explore the gardens designed by Frederick Law Olmsted. One Lodge St., Tel: 800-411-3812. www.biltmore.com

East Fork Pottery. The locally-made stoneware here is quickly becoming a collectible, and they also create limited-edition pieces, such as its annual Equality Mug. 82 North Lexington Ave., Tel: 828-237-7200. www.eastfork.com

The Foundry Hotel. A former steel mill has been transformed into an Asheville retreat and pays homage to the neighborhoods' diverse cultural history with an array of design and dining details, including a modern take on Appalachian cuisine at Benne on Eagle. 51 South Market St., Tel: 828-552-8545. www.foundryasheville.com

Hood Huggers. DeWayne Barton's walking and driving tours offer an insider's perspective on The Block, its legacy, and what's being done to preserve the neighborhood's heritage. www.hoodhuggers.com

Sovereign Remedies. Charles Hodge and Sunil Patel's bi-level restaurant relies on foraged produce and other locally sourced items for a vibrant menu in an eclectic and welcoming setting. 29 North Market St., Tel: 828-919-9518. www.sovereignremedies.com

NEW YORK CITY

ART SMART. Art historians and experts offer exceptional insights and access to New York City museums and galleries, including contemporary art, technology tours, and custom itineraries. Tel: 212-595-4444. www.artsmart.com

Museum of Arts and Design. Located just south of Central Park, the museum celebrates contemporary and historic innovation in craft, art and design. 2 Columbus Circle, Tel: 212-299-7777. www.madmuseum.org

Times Square EDITION. Ian Schrager's latest hospitality masterpiece creates an oasis of modern luxury that towers over Manhattan's epicenter. Multiple dining and entertainment venues offer a visual feast, including The Paradise Club, a wild dinner theater experience created by The House of Yes. 701 Seventh Ave., Tel: 212-398-7017. www.editionhotels.com/times-square

ENGLAND

Design Museum. Discover the world's leading museum devoted to contemporary design in every form from architecture and fashion to graphics, as well as product and industrial design. 224-238 Kensington High St., London, England. Tel: +44-20-3862-5900. www.designmuseum.org

European Waterways. Traverse the Thames River aboard a hotel barge with private chef, escorted excursions, and access to England's most distinguished estates. Tel: 877-879-8808. www.europeanwaterways.com

Heckfield Place. This restored Georgian home transformed into a 400-acre estate offers plentiful opportunities to unwind and explore the grounds, as well as a refined culinary program that utilizes an on-site biodynamic farm. Hampshire, England. Tel: +44- (0)-118-932-6868. www.heckfieldplace.com

Highclere Castle. Experience the real-life *Downton Abbey* with a visit to the home of the Earl and Countess of Carnarvon. In addition to the castle and gardens, don't miss the Egyptian Exhibition, which celebrates the 5th Earl's 1922 discovery of Tutankhamun. Newbury, England. Tel: +44-01635-253210. www.highclerecastle.co.uk